

**NEWSLETTER November 2009:** Art Glass Walls

[Join or Leave our Mailing list](#)

**Objectives**

Decorative glass walls represent the utilitarian version of a graffiti or mural. They combine a protective, translucent envelope with artistic images. The glass can be treated with silk-screen print of "frit"- patterns of colored glass powder fused onto the glass like enamel, or the glass can be sand blasted, or etched with different methods.

always an integrated approach of the support system directly holding the glass in place, and a minimal back-up structure, typically steel.



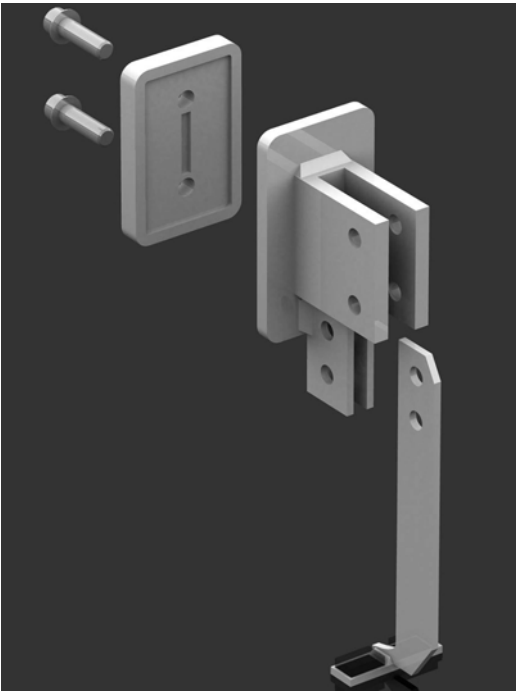
**First National Bank; Metro Crossing, Iowa; detail**  
**Photographer: Tom Kessler**

Technically the glass walls need to comply with all requirements for a weather-tight envelope. However, the typically continuous motives over several glass panels ask for a minimal glazing system, separating the panels only with narrow joints. Advanced glazing systems, like the ones shown in the examples of this newsletter, fulfill this objective. The design of these glazing systems is



**First National Bank; Metro Crossing, Iowa; corners**  
**Photographer: Tom Kessler**





**Exploded view of the glazing bracket with extension stem to take the glass weight**

STUTZKI Engineering, Inc. developed the structural concept, detailed, and engineered the glass walls for the First National Bank Building at the Metro Crossing.

The continuity of the images, over several glass panes, works best with a structural glazing system, like in the following project: the refurbishing of the famous "Infinity Chamber by Stanley Landsman (1968). STUTZKI helped to upgrade the glass to current code and safety standards for the Milwaukee Art Museum, keeping the artist's intent as closely as possible.



**Laser etched art glass for a current project; artist: Christian Janssen**

A current project consists of large areas of insulating glass with four layers of etching, producing an almost ethereal veil of glass. The minimal glazing joint, as well as a minimal steel back-up structure are critical for the continuity of the images. STUTZKI developed the system and produced the engineering and fabrication drawings for this project, pushing the limits of current glass technology.

STUTZKI Engineering provides innovative solutions to Architects and Contractors. We specialize in the structural applications of glass products, cable structures, blast resistant design, and thermal analysis.

STUTZKI Engineering is an AAMA Consultant and a registered Small Business Enterprise.

For more information about STUTZKI Engineering please call 1-414-455-4815 or visit:

[www.stutzkiengineering.com](http://www.stutzkiengineering.com)

or

[www.glasstairs.com](http://www.glasstairs.com)



338 N. Milwaukee Street  
Milwaukee, WI 53202